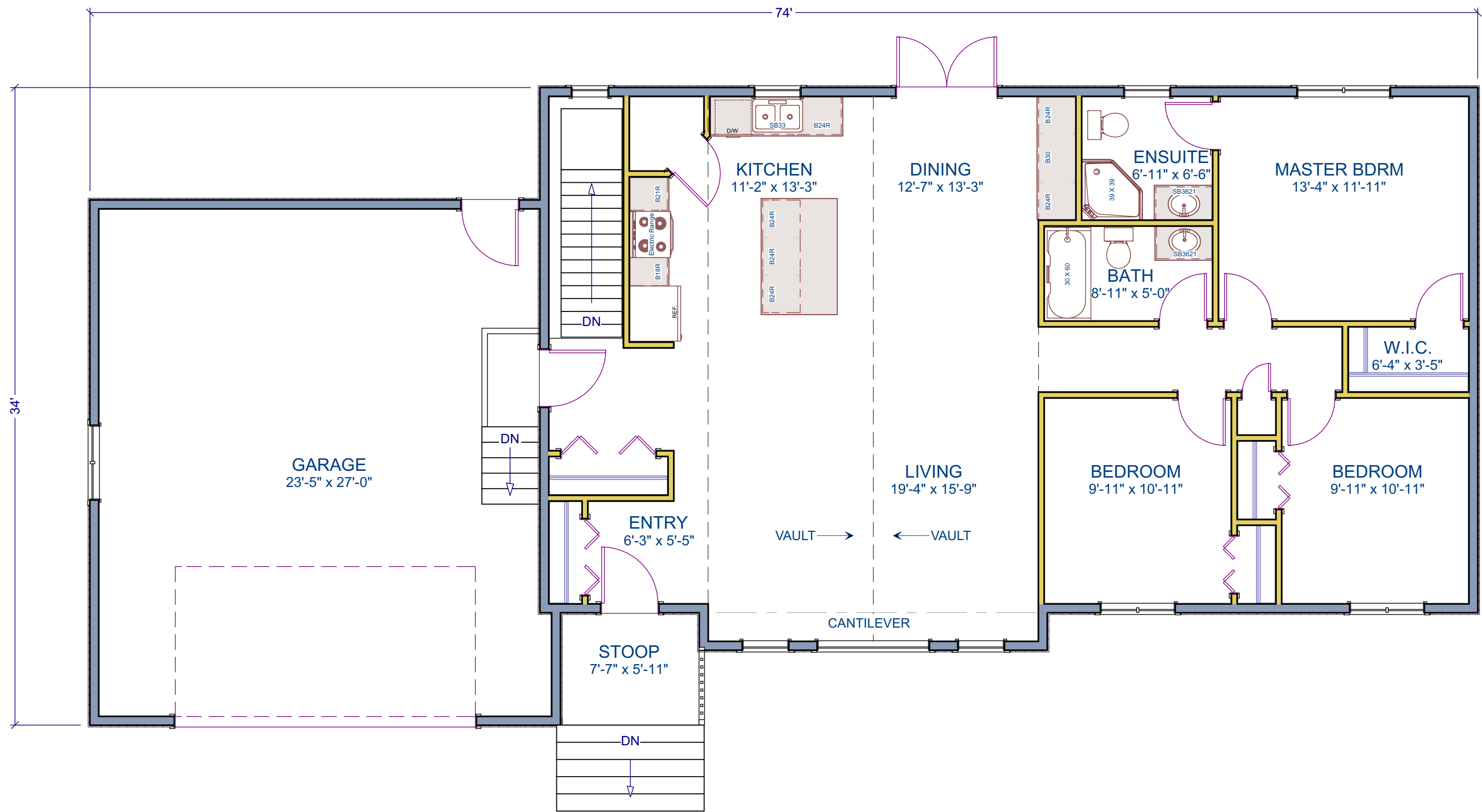


24 CAROL WAY



MAIN FLOOR PLAN

WINTERS BUILDING DESIGN.com
Residential Drafting & House Plans 204-223-5181

STYLE: SINGLE STOREY
 HOUSE:
 GARAGE:
 STOOP:
 WIDTH / DEPTH:

1437 SQ. FT.
 700 SQ. FT.
 44 SQ. FT.
 74'-0" X 34'-0"

- FEATURES:
- 3 BEDROOMS
 - ENSUITE & WALK IN CLOSET IN MASTER BEDROOM
 - CONCRETE BASEMENT
 - VAULTED CEILINGS
 - WALK IN PANTRY



FRONT ELEVATION