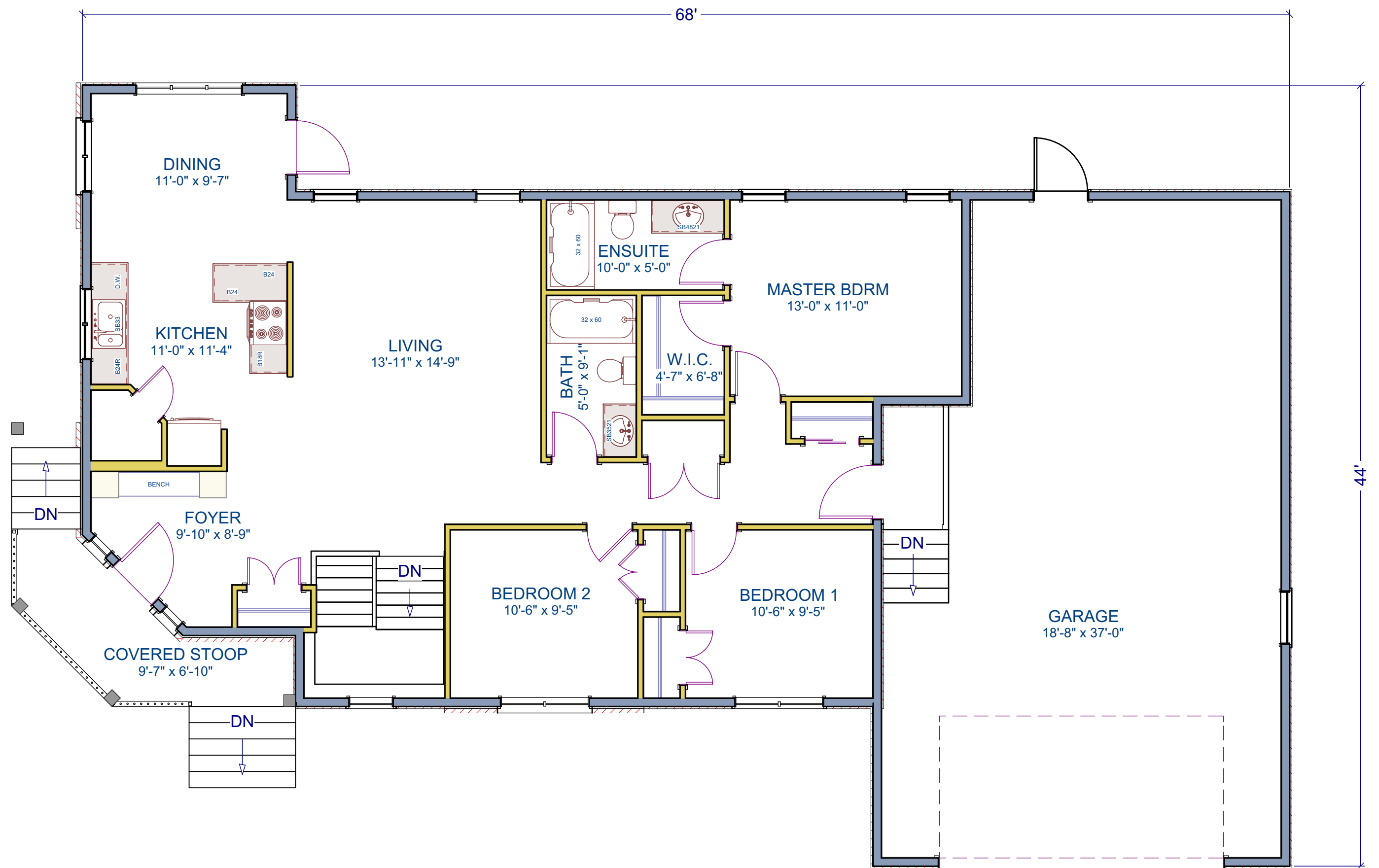


KINLEY RESIDENCE



MAIN FLOOR PLAN

WINTERS BUILDING DESIGN .COM
 Residential Drafting & House Plans 204-223-5181

STYLE: SINGLE STORY
 HOUSE: 1368 SQ. FT.
 GARAGE: 824 SQ. FT.
 STOOP: 86 SQ. FT.
 WIDTH / DEPTH: 68'-0" X 44'-0"

FEATURES:
 - 3 BEDROOMS
 - ENSUITE & WALK IN CLOSET
 IN MASTER BEDROOM
 - CONCRETE BASEMENT
 - CORNER LOT DESIGN



FRONT ELEVATION